



ANTICHE TRAME

la suggestione del colore



Ambienti di prestigio con arredamento classico o moderno, esercizi pubblici di tendenza e molto frequentati, “rifugi” per un fine settimana di tranquillità: per le finiture decorative di tutti i vostri spazi, l’esperienza e il “**Made in Italy**” UCIC hanno creato **Antiche Trame**, la finitura perfetta per ogni vostra esigenza.

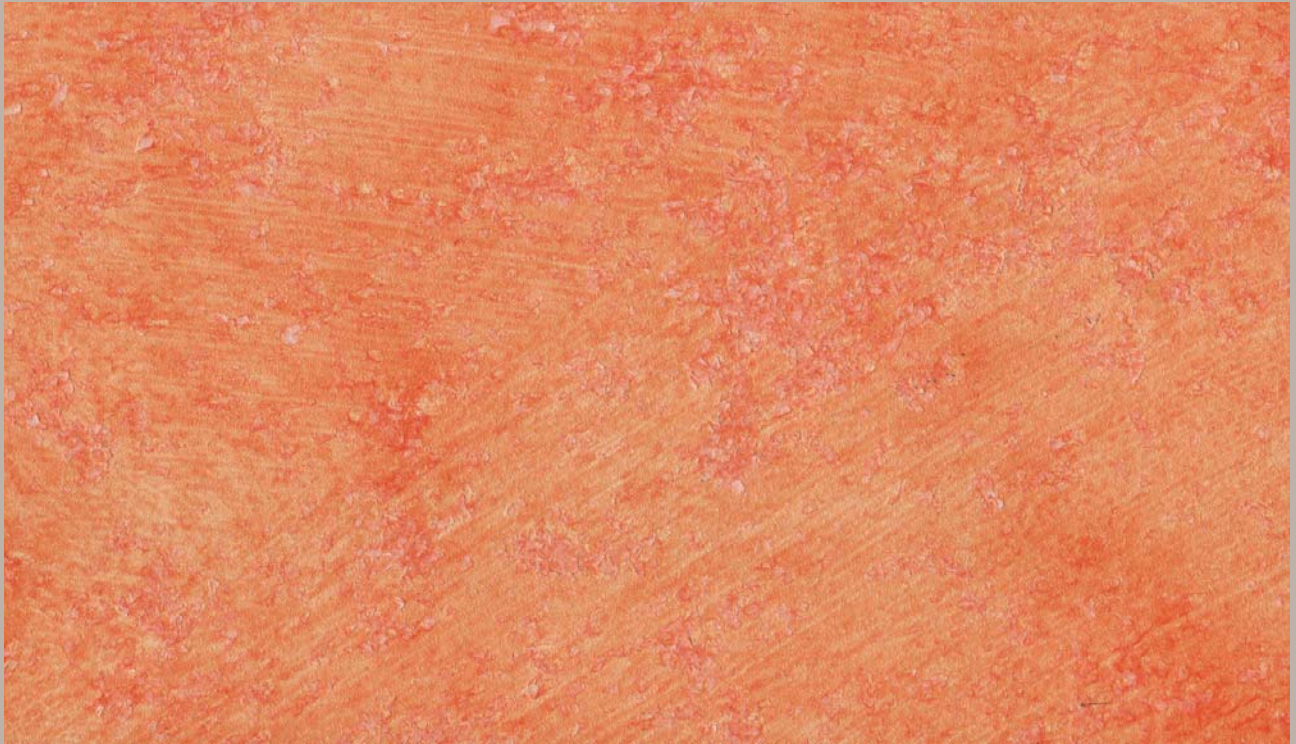
Rivestimento acrilico a base acquosa, nato dall’incontro di materie prime selezionate, Antiche Trame è facilmente applicabile e resistente. Inoltre, se desiderate ottenere effetti policromatici particolari e originali vi basterà mescolare (secondo le istruzioni riportate più avanti) Antiche Trame con **Cyberlux** o **Spectra**, i nostri fantastici colori acrilici. Per un elettrizzante risultato metallizzato scegliete Cyberlux, e se preferite un rilassante effetto perlato, Spectra è quello che fa per voi.



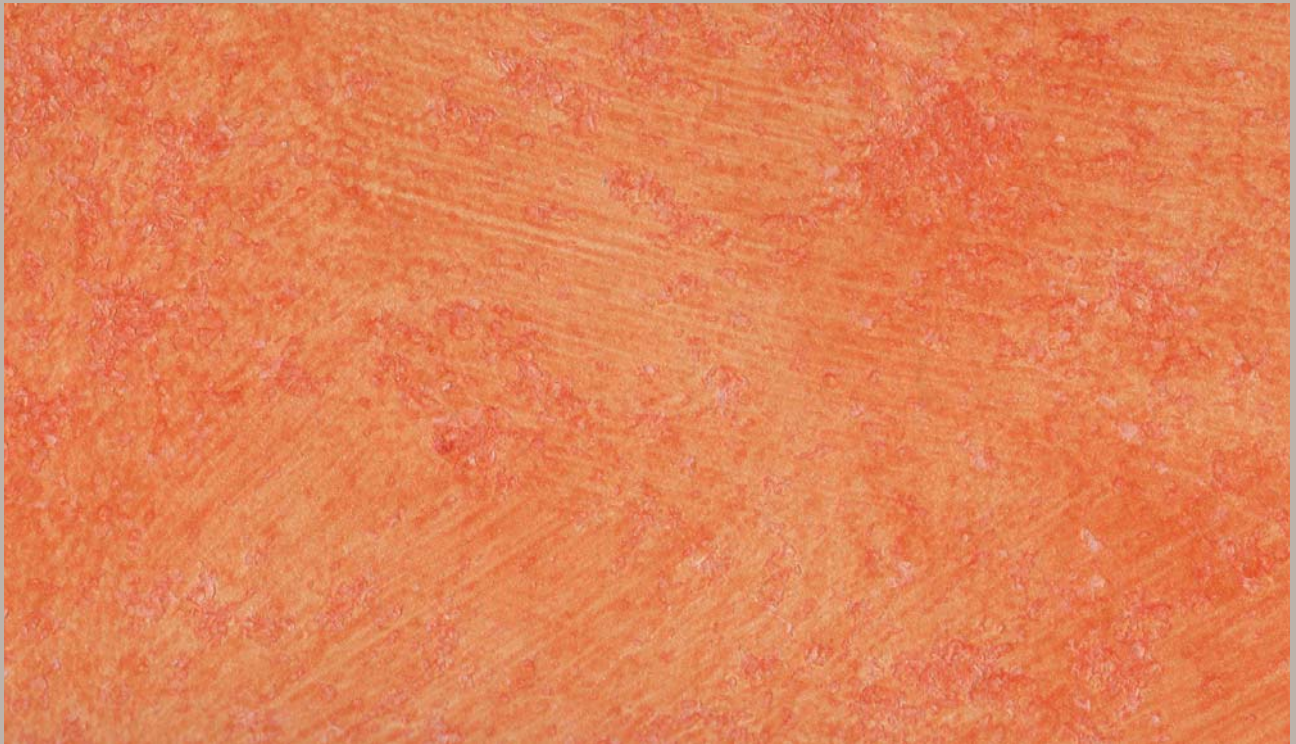


Classic or modern high tone environments, trendy and crowded business, “shelters” for a peaceful weekend: for the decorative finishes of all your rooms, the experience and “**Made in Italy**” by UCIC create **Antiche Trame**, the perfect product for every need. Acrylic, water-based coating, made up of selected raw materials, Antiche Trame is easy to apply and resistant. Besides, if you want to get particular and original polychromatic effects just mix (following the instructions below) Antiche Trame with **Cyberlux** or **Spectra**, our fantastic acrylic colours. For a thrilling metallic effect choose Cyberlux, and if you prefer a relaxing pearlescent effect, Spectra is your “must”.

ANTICHE TRAME



25 • Antiche Trame



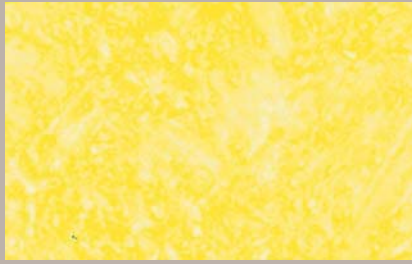
25 • Antiche Trame, lucidato con **Decorfinish** - *Antiche Trame, topcoated with **Decorfinish***

Gli esempi di tonalità mostrati in questa cartella sono stati ottenuti miscelando Antiche Trame (confezione da 2,5 litri) con Totocolor e Stabilcolor.

Tutte le tinte sono da considerarsi puramente indicative

The color samples in this folder are obtained mixing Antiche Trame (2,5 lt packages) with Totocolor and Stabilcolor.

All the tints are to be considered as approximate



9 • 15 ml T26



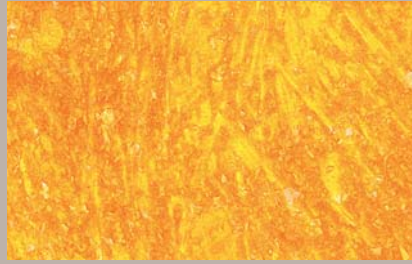
8 • 15 ml T34



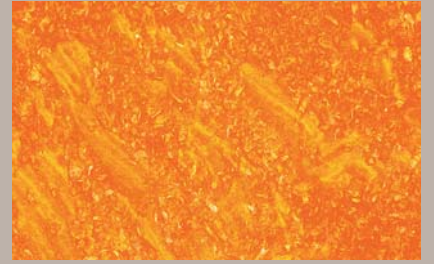
6 • 200 ml T25



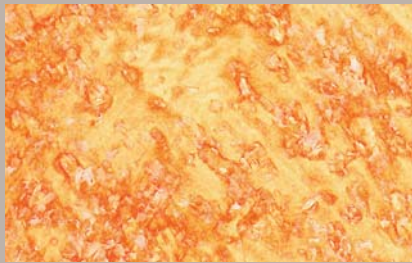
7 • 30 ml T34



3 • 200 ml T25 + 15 ml T27



1 • 200 ml T25 + 15 ml T28



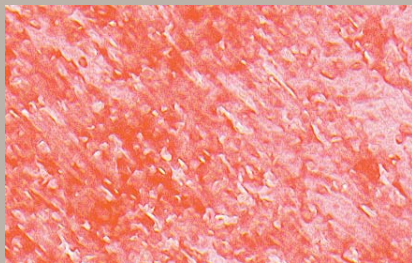
24 • 15 ml T27 + 15 ml T25



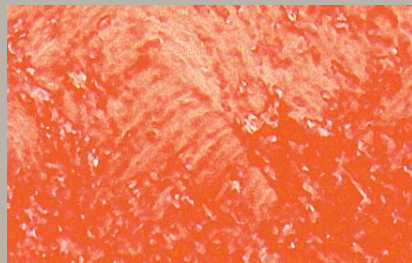
25 • 30 ml T27



21 • 50 ml T28 + 30 ml T25



35 • 15 ml T28



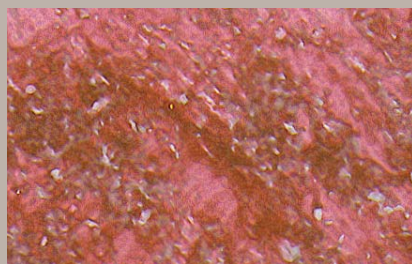
26 • 30 ml T28 + 15 ml T25



19 • 100 ml T28 + 50 ml T25



33 • 30 ml T28



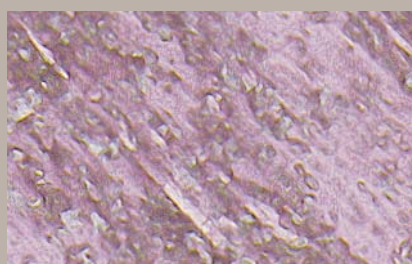
34 • 15 ml T29 + 30 ml T28



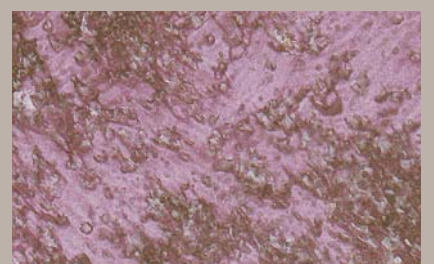
27 • 15 ml T22 + 15 ml T28



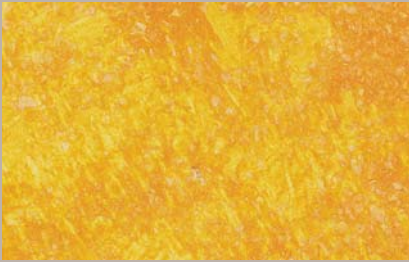
36 • 15 ml T22



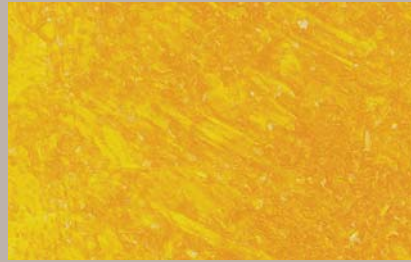
31 • 15 ml T29



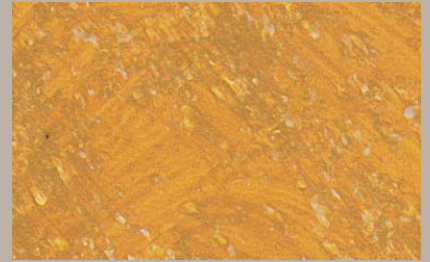
32 • 30 ml T29



5 • 50 ml T25 + 15 ml T21



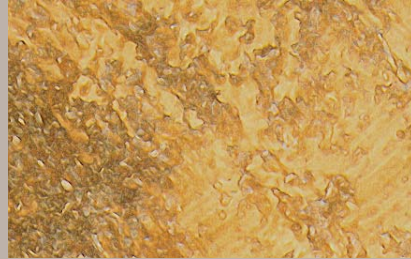
4 • 200 ml T25 + 15 ml T21



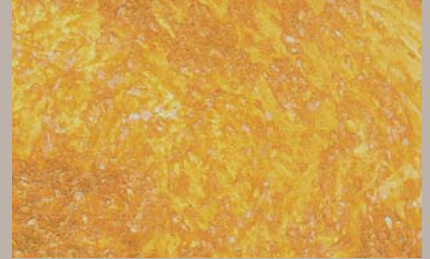
12 • 150 ml ST1



17 • 15 ml T21



11 • 15 ml T34 + 15 ml T23



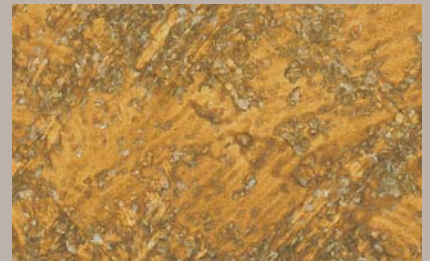
2 • 50 ml S1



18 • 30 ml T21



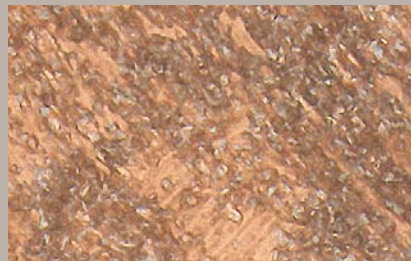
14 • 30 ml T21 + 15 ml T25



13 • 50 ml T23 + 50 ml T26



15 • 15 ml T23



16 • 30 ml T23



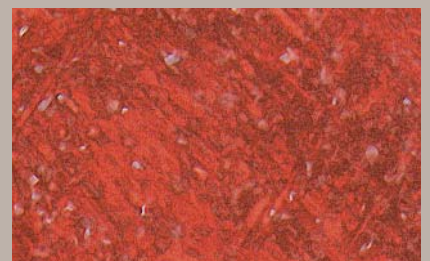
10 • 50 ml ST3



22 • 15 ml T22 + 30 ml T25 + 15 ml T28



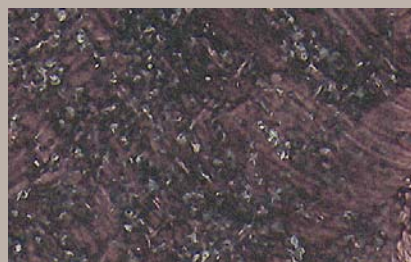
23 • 50 ml S2 + 200 ml T25



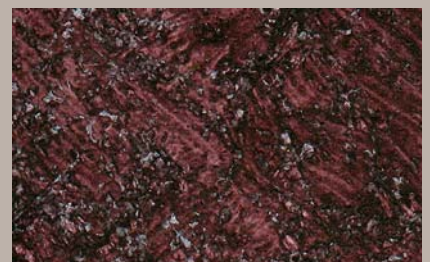
20 • 50 ml S2



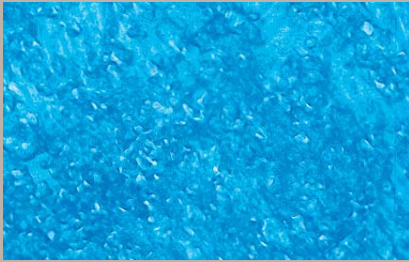
28 • 15 ml T24



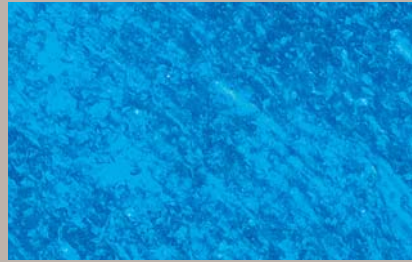
29 • 45 ml T29 + 15 ml T24



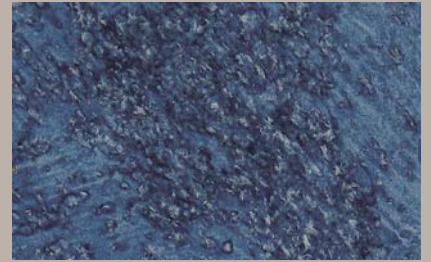
30 • 80 ml T28 + 15 ml T24



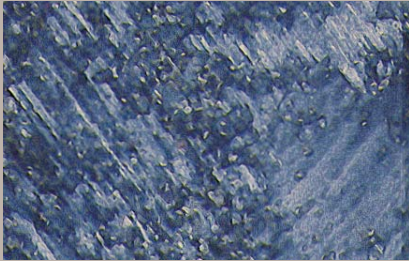
44 • 15 ml T30



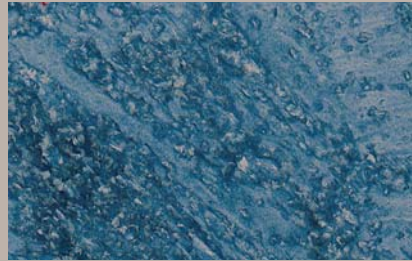
45 • 30 ml T30



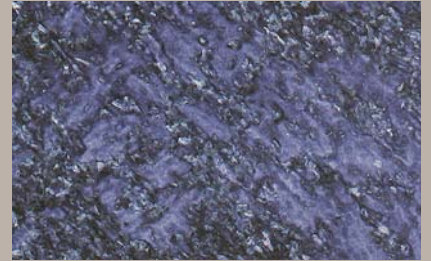
41 • 30 ml T29 + 30 ml T30



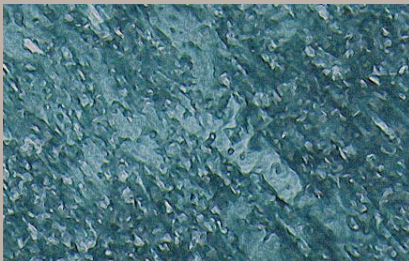
42 • 15 ml T30 + 15 ml T28



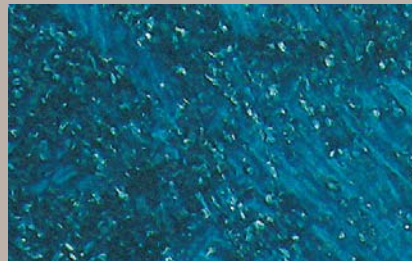
40 • 15 ml T29 + 15 ml T30



39 • 45 ml T29 + 15 ml T30



38 • 15 ml T30 + 15 ml T22



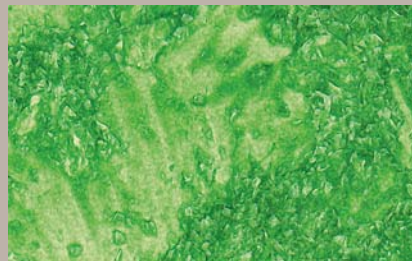
43 • 100 ml T30 + 50 ml S5



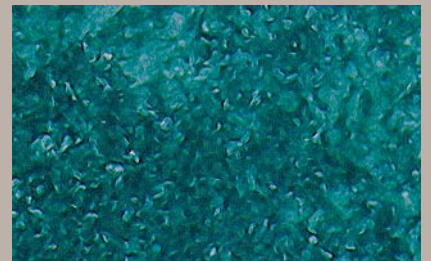
37 • 50 ml T30 + 15 ml T24



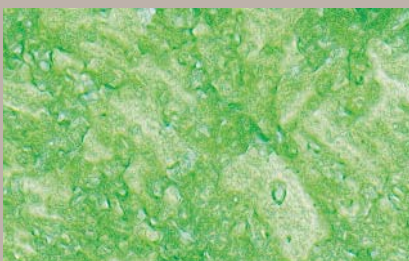
51 • 15 ml T32



52 • 30 ml T32



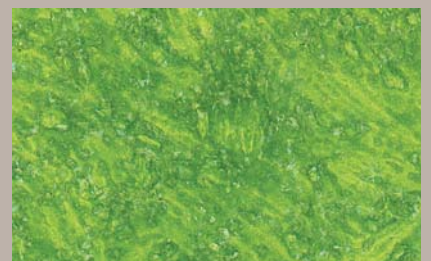
46 • 50 ml S5



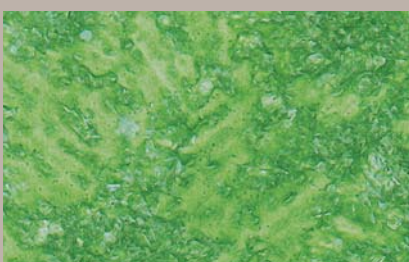
53 • 15 ml T31



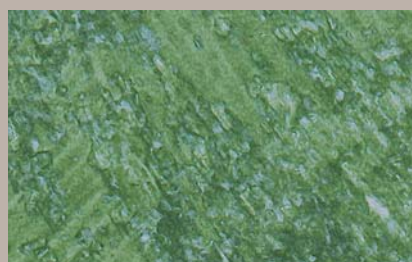
49 • 100 ml T26 + 15 ml T31



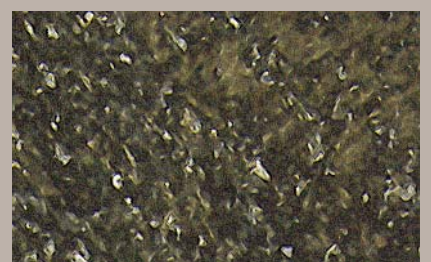
50 • 30 ml T32 + 150 ml T26



54 • 30 ml T31



48 • 50 ml S6



47 • 50 ml S6 + 15 ml T24

ANTICHE TRAME + Spectra

effetto policromatico perlescente

Per colorazioni dall'incredibile effetto perlescente mescolate una confezione da 2,5 litri di Antiche Trame con i colori acrilici Spectra, secondo le istruzioni riportate sulla cartella: un tocco sofisticato per i vostri ambienti.

polychromatic pearlescent effect

In order to obtain an amazing pearlescent effect just mix a 2,5 liters package of Antiche Trame with our acrylic colours Spectra, following the instruction in the folder: a sophisticated touch for your environments.



71 • 500 ml Spectra 6



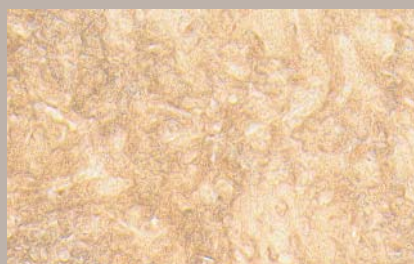
66 • 500 ml Spectra 3



69 • 500 ml Spectra 5



70 • 120 ml Spectra 11



65 • 500 ml Spectra 2



64 • 500 ml Spectra 4



72 • 500 ml Spectra 9



68 • 500 ml Spectra 7



67 • 500 ml Spectra 8

Spectra

Idrocolori acrilici perlescenti - Confezioni: 60 ml, 500 ml
Water-based acrylic "pearlescent" colours - Packaging: 60 ml, 500 ml



1
GIALLO
LINO



2
ZIBELLINO



3
ARANCIO
CALIPSO



4
TERRA
DI SIENA



5
ROSA
TRAMONTO



6
GIALLO
SOLE



7
VERDE
ACQUA



8
VERDE
GIADA



9
AZZURRO
CIELO



10
AZZURRO
TROPICI



11
SETA
LILLA

AVVERTENZA: UTILIZZARE ANTICHE TRAME CON SPECTRA SUBITO DOPO LA MISCELAZIONE. IL PRODOTTO MISCELATO NON SI CONSERVA A LUNGO.
CAUTION: USE ANTICHE TRAME WITH SPECTRA JUST AFTER THE MIXING. THE MIXED PRODUCT DOES NOT LAST FOR LONG TIME.

ANTICHE TRAME + Spectra



64 • 500 ml Spectra 4

ANTICHE TRAME + Cyberlux

effetto policromatico metallescente

Per colorazioni dal magico effetto metallizzato mescolate una confezione da 2,5 litri di Antiche Trame con i colori acrilici Cyberlux, secondo le istruzioni riportate sulla cartella: un tocco di raffinatezza per i vostri ambienti.

polychromatic metallic effect

In order to obtain a magic metallic effect just mix a 2,5 liters package of Antiche Trame with our acrylic colours Cyberlux, following the instruction in the folder: a refined touch for your environments.



62 • 500 ml Cyberlux 1



55 • 500 ml Cyberlux 2



61 • 500 ml Cyberlux 3



56 • 500 ml Cyberlux 10



60 • 500 ml Cyberlux 9



63 • 500 ml Cyberlux 4



58 • 500 ml Cyberlux 5



59 • 500 ml Cyberlux 7



57 • 500 ml Cyberlux 11

Cyberlux

Idrocolori acrilici metallescenti - Confezioni: 60 ml, 500 ml
Water-based acrylic metallic colours - Packaging: 60 ml, 500 ml



C1
ORO
FAVILLA



C2
ORO
AZTECO



C3
BRONZO



C4
RAME



C5
ARGENTO



C6
MADRE
PERLA



C7
ARGENTO
ANTICO



C8
BRONZO
ANTICO



C9
RAME
ANTICO



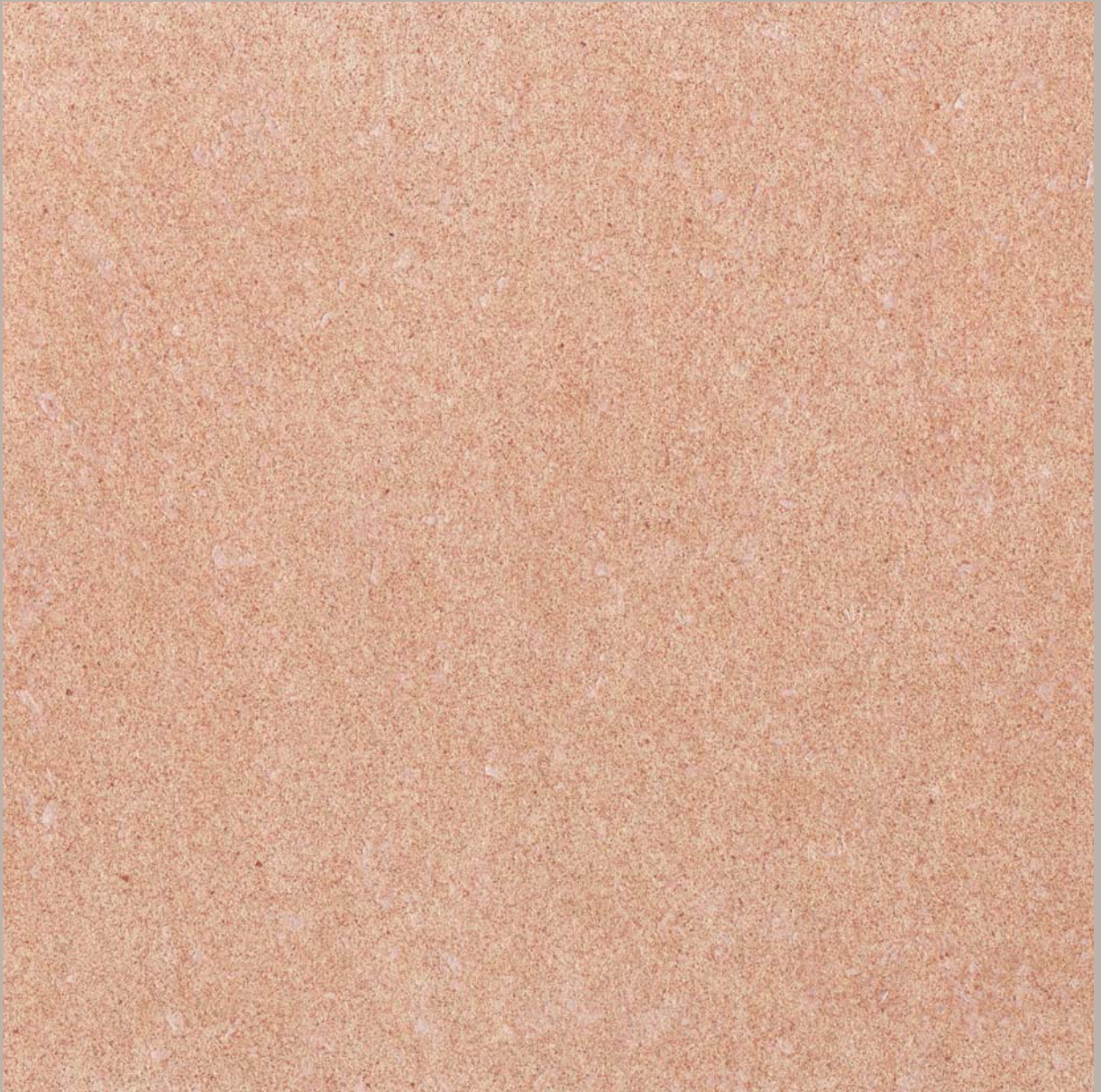
C10
ORO
ANTICO



C11
ACCIAIO
BRUNITO

AVVERTENZA: UTILIZZARE ANTICHE TRAME CON CYBERLUX SUBITO DOPO LA MISCELAZIONE. IL PRODOTTO MISCELATO NON SI CONSERVA A LUNGO.
CAUTION: USE ANTICHE TRAME WITH CYBERLUX JUST AFTER THE MIXING. THE MIXED PRODUCT DOES NOT LAST FOR LONG TIME.

ANTICHE TRAME + Cyberlux



55 • 500 ml Cyberlux 2

ANTICHE TRAME

ISTRUZIONI PER L'APPLICAZIONE DEL PRODOTTO

1) Preparazione dei supporti

Nel caso di muri perfettamente lisci: per un risultato durevole, pulire la superficie da rivestire, eliminando ogni traccia delle pitture precedenti, soprattutto se non completamente aderenti al muro.

Poi, eventualmente, applicare uno strato di fissativo **Decorprimer**.

Nel caso di muri scabri o con evidenti irregolarità: prima di compiere le precedenti operazioni, è consigliabile rasare la superficie da trattare.

2) Applicazione di Decorfondo

Applicare uno strato di Decorfondo (fondo acrilico universale per prodotti decorativi), usando un rullo a pelo corto.

Rendimento teorico di Decorfondo: 10 m²/lt

Pulizia attrezzi: acqua

Temperatura di stoccaggio: +5°C / + 35°C

Sovrapplicazione: 4-6 ore a seconda della temperatura ambientale

3) Applicazione di Antiche Trame

Dopo aver fatto asciugare Decorfondo per almeno 24 ore, applicare Antiche Trame con il pennello spalter UCIC con pennellate incrociate su una superficie di 1-2 metri quadri e ripassando poi con l'attrezzo scarico per ottenere un effetto goffrato, a rilievo.

Se invece si preferisce un effetto liscio, dopo 15-30 minuti (a seconda del grado di assorbimento della parete) ripassare Antiche Trame con la spatola di plastica UCIC.

Per una superficie brillante e superlavabile si consiglia di stendere uno strato del lucidante protettivo **Decorfinish** su Antiche Trame, completamente asciutto.

INFORMAZIONI TECNICHE

Rendimento teorico: 8 m²/lt

Pulizia attrezzi: acqua tiepida

Temperatura di stoccaggio: +5°C / + 35°C

COLORAZIONE DI ANTICHE TRAME

Le tinte riprodotte in questa cartella sono solo una parte delle centinaia, realizzabili miscelando Antiche Trame (confezioni di 2,5 litri) con i nostri coloranti universali **Totocolor** e **Stabilcolor**. Durante la preparazione della tonalità desiderata, seguire attentamente le indicazioni fornite dalla cartella; mescolare con l'agitatore prima dell'uso.

Per spettacolari effetti metallici e perlato miscelare Antiche Trame (confezioni di 2,5 litri) con i colori acrilici **Cyberlux** (effetto metallico) e **Spectra** (effetto perlato).

I nostri coloranti universali:

Totocolor (dai toni brillanti) e **Stabilcolor** (dai toni opachi) sono coloranti universali ad alta concentrazione, adatti sia per colorare prodotti vernicianti convenzionali ad acqua e a solvente, sia per colorare i prodotti decorativi a marchio UCIC.

Per la loro consistenza fluida i nostri coloranti universali sono diluibili istantaneamente, dosabili, mescolabili tra loro, resistenti al freddo, al caldo e alle lunghe giacenze in magazzino.

Formato flaconi disponibili:

Totocolor: 15 ml, 50 ml, 100 ml

Stabilcolor: 50 ml, 100 ml

DIRECTIONS FOR USE

1) Surface preparation

For perfectly smooth walls: in order to get a durable result, clean the surface, removing any previous paints, especially where not completely adherent.

Then, apply just one coat of sealant primer **Decorprimer**.

For rough or irregular walls: it's advisable to smooth the surface, before following the instruction above.

2) Application of Decorfondo

Apply a coat of Decorfondo (universal primer for decorative products) using a short hair roller.

Theoretical coverage of Decorfondo: 10 sqm/litre

Tools cleaning: water

Storage temperature: +5°C / + 35°C

Overcoating: 4-6 hours according to the environmental temperature

3) Application of Antiche Trame

After Decorfondo is dried for at least 24 hours, apply Antiche Trame with UCIC spalter brush, giving crossed and irregular strokes on a 1-2 sqm surface and tracing over again with the not soaked spalter, in order to get a embossing, "in relief" effect.

When a perfectly smoothed effect is desired, after 15-30 minutes (due to the wall absorption) trace over Antiche Trame with a UCIC plastic trowel.

For a brilliant and super washable surface apply a coat of our protective acrylic glossy varnish **Decorfinish** on completely dried Antiche Trame.

TECHNICAL INFORMATION

Theoretical coverage: 8 sqm/litre

Tools cleaning: water

Storage temperature: +5°C / + 35°C

ANTICHE TRAME TINTING METHOD

The colors shown in this folder are just a part of the hundreds, achievable mixing Antiche Trame (2,5 liter packages) with our universal **Totocolor** and **Stabilcolor** colorants.

In painting preparation follow carefully the instruction in this folder; mix with a slow speed mixer before using.

In order to get amazing metallic or pearlescent effects, mix Antiche Trame with our acrylic colours **Cyberlux** (metallic effects) or **Spectra** (pearlescent effects).

Our universal colorants:

Totocolor (brilliant shades) and **Stabilcolor** (mat shades) are super concentrated colorants, suitable for tinting any conventional water and solvent-based paint, as well as for UCIC decorative finishes.

According to their fluidity, our universal colorants are easy to dose, to mix and to thin, frost and heat resistant and can be stored for years.

Available packaging sizes:

Totocolor: 15 ml, 50 ml, 100 ml

Stabilcolor: 50 ml, 100 ml

